

TEMBOO^o

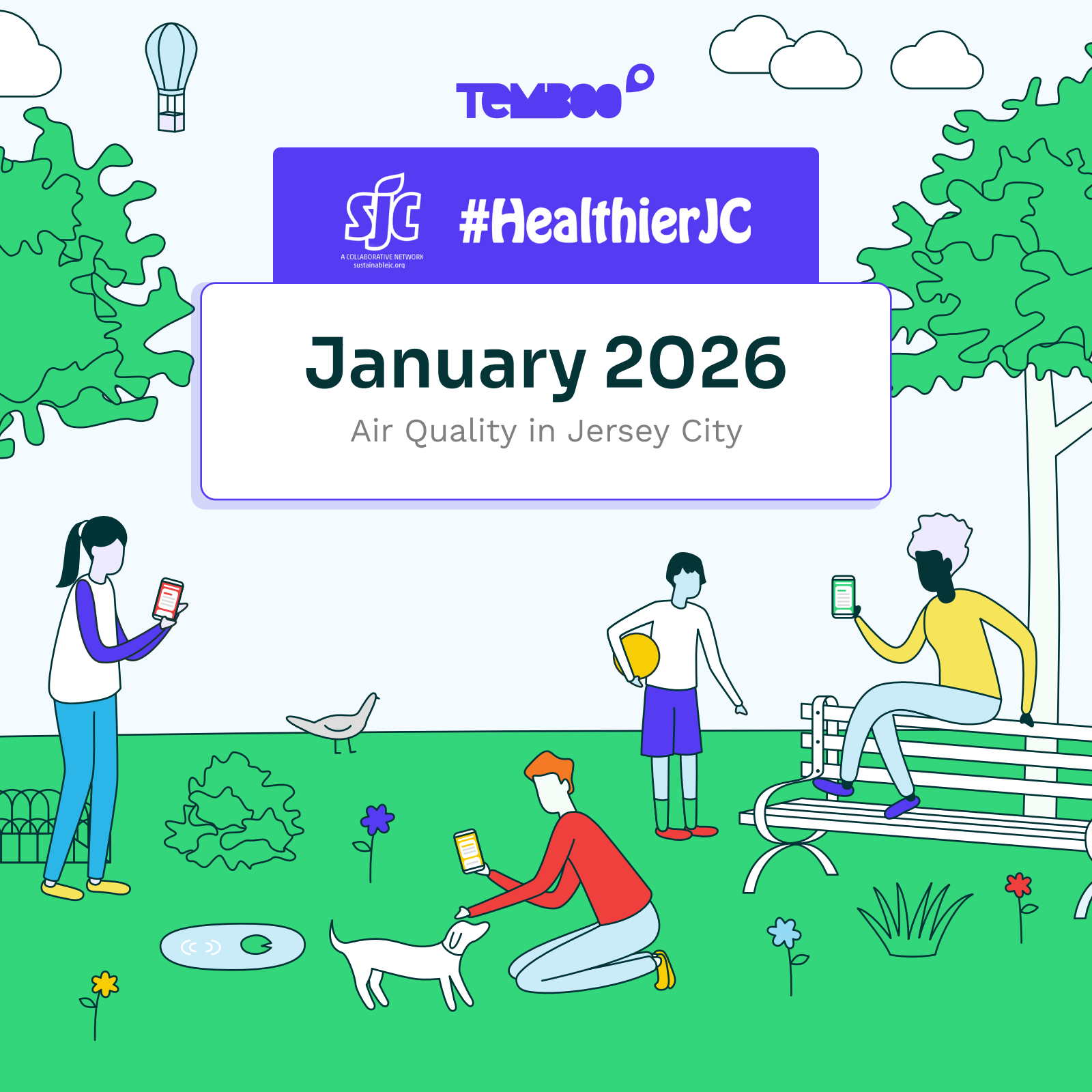


A COLLABORATIVE NETWORK
sustainablejc.org

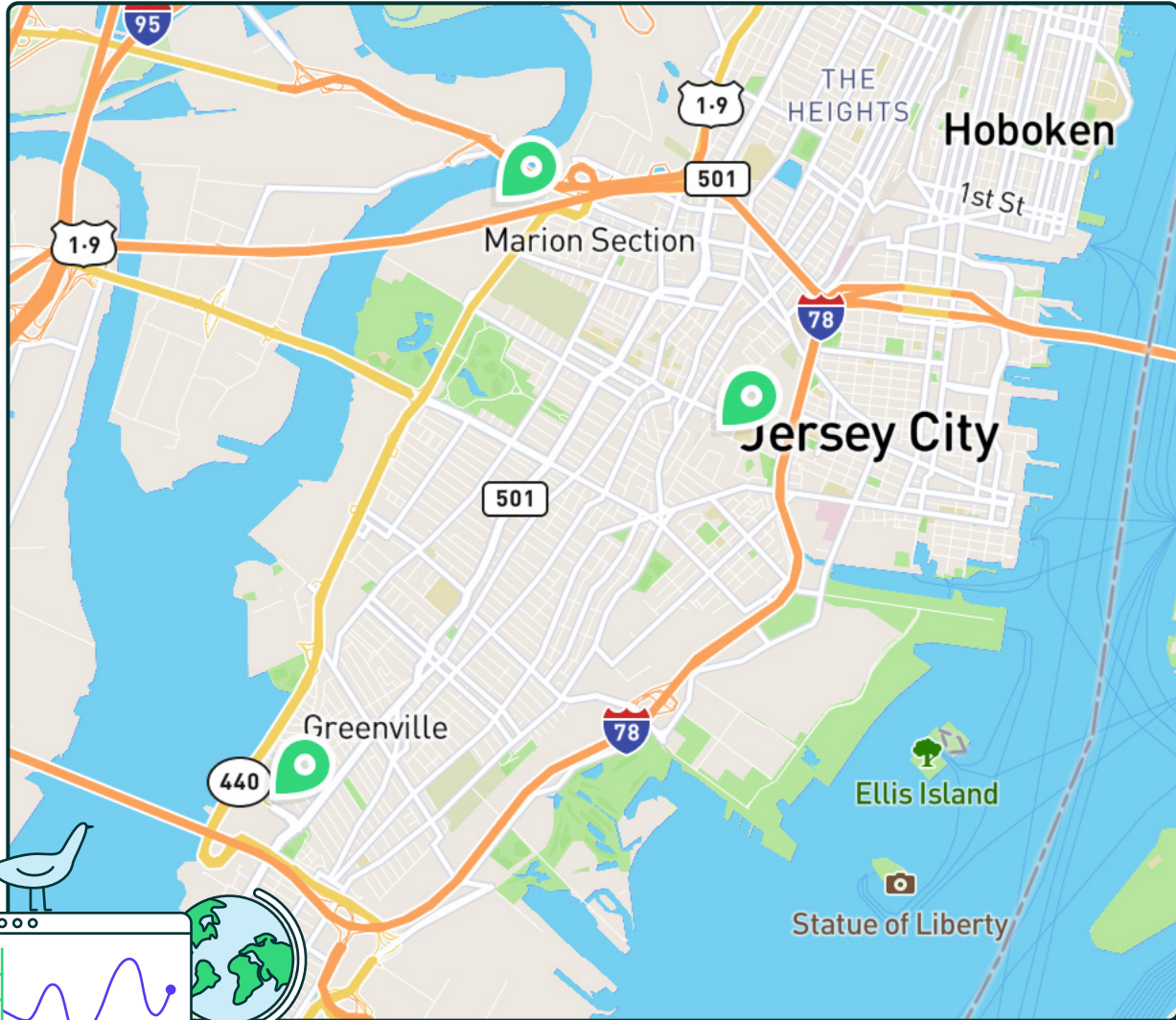
#HealthierJC

January 2026

Air Quality in Jersey City

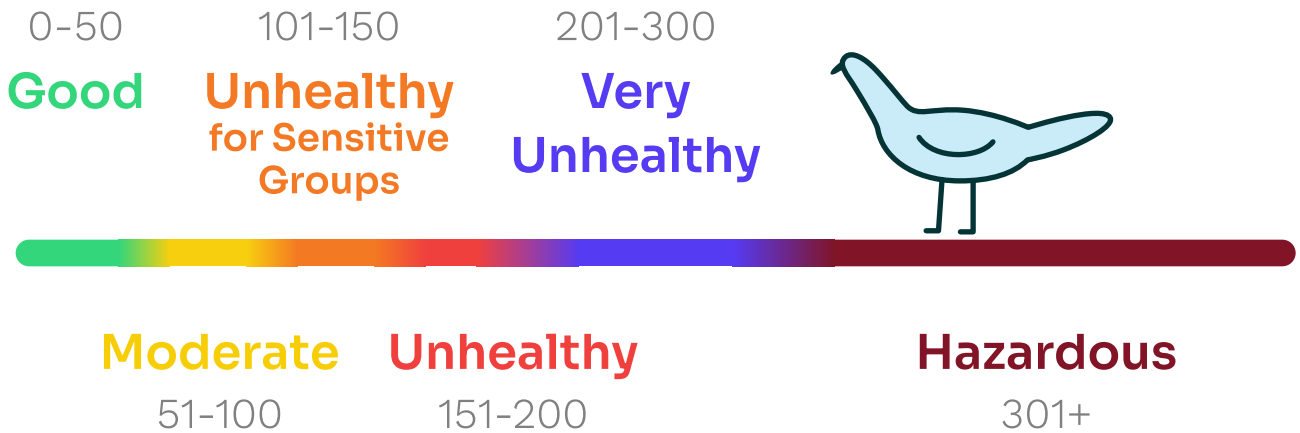


Our air quality monitoring locations



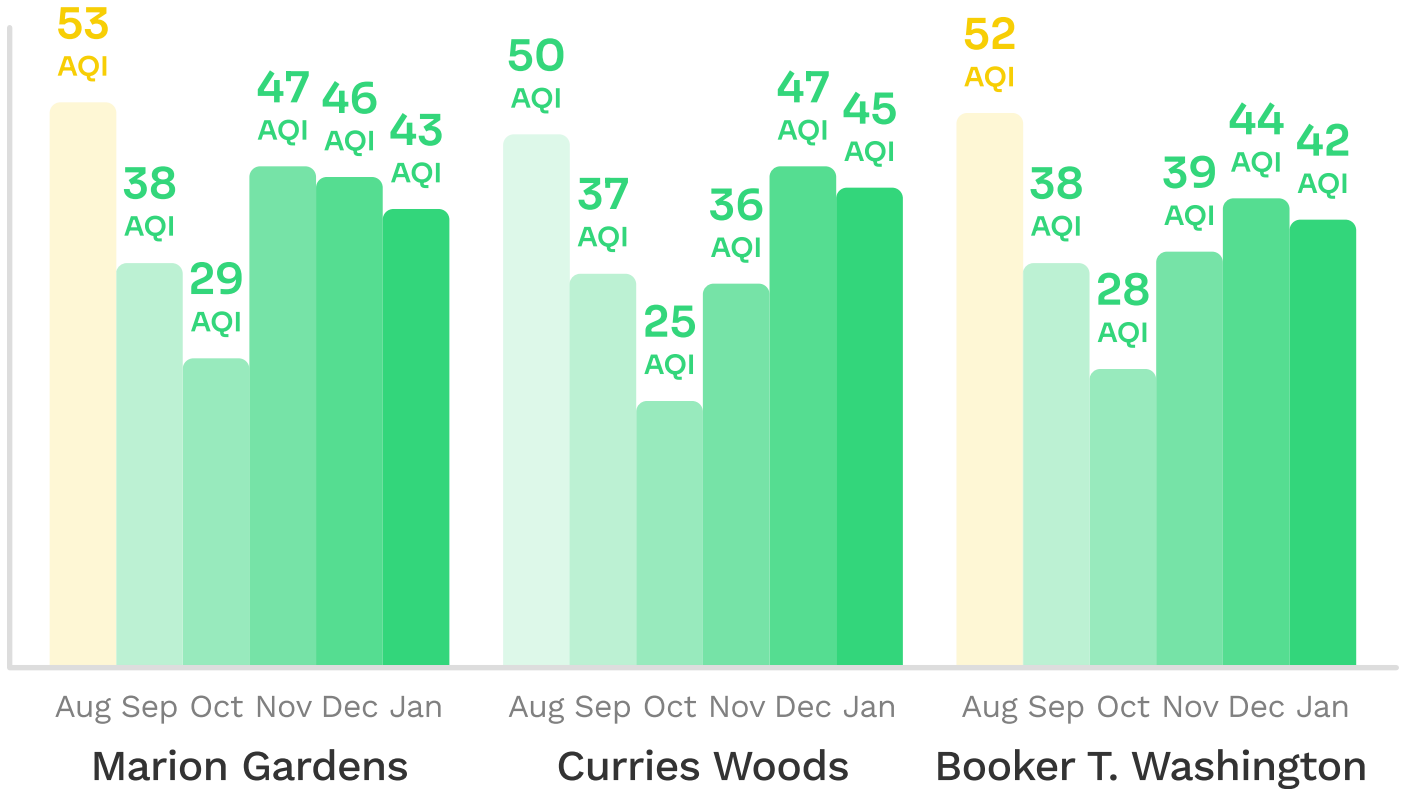
The Air Quality Index (AQI) is a scale for reporting daily air quality.

It tells you how clean or unhealthy your air is, and what associated health effects might be a concern.



Each pollutant has an individual AQI value, and the highest of those values is reported as the overall AQI.

Average Monthly AQI Readings



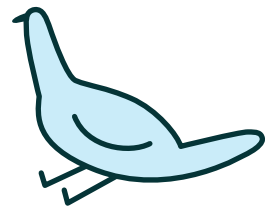
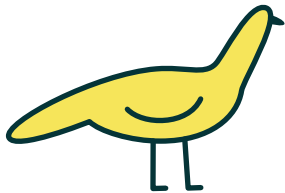
August average is based on 26 days of available data.
September average is based on 29 days of available data.

An Air Quality Index (AQI) value of 50 or below represents good air quality. The higher the AQI value, the greater the level of air pollution and public health risk.

1-hour Max Daily AQI at Marion Gardens

January 2026						
				1 49 AQI	2 52 AQI	3 54 AQI
4 48 AQI	5 60 AQI	6 129 AQI	7 102 AQI	8 103 AQI	9 99 AQI	10 82 AQI
11 51 AQI	12 56 AQI	13 58 AQI	14 65 AQI	15 71 AQI	16 46 AQI	17 111 AQI
18 132 AQI	19 59 AQI	20 51 AQI	21 61 AQI	22 63 AQI	23 37 AQI	24 28 AQI
25 28 AQI	26 30 AQI	27 56 AQI	28 67 AQI	29 55 AQI	30 31 AQI	31 41 AQI

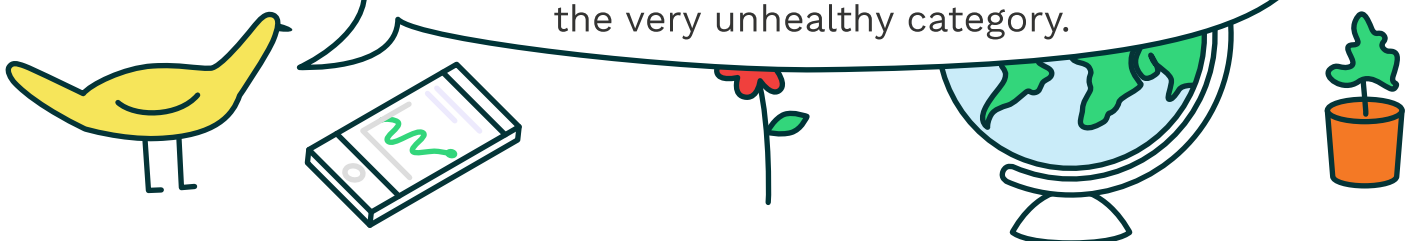
There were 17 days with hourly AQIs in the moderate category and 5 days in the unhealthy for sensitive groups category.



1-hour Max Daily AQI at Curries Woods

January 2026						
				1 48 AQI	2 54 AQI	3 60 AQI
4 52 AQI	5 63 AQI	6 153 AQI	7 283 AQI	8 66 AQI	9 66 AQI	10 72 AQI
11 51 AQI	12 53 AQI	13 58 AQI	14 65 AQI	15 63 AQI	16 49 AQI	17 97 AQI
18 129 AQI	19 64 AQI	20 52 AQI	21 61 AQI	22 66 AQI	23 35 AQI	24 30 AQI
25 34 AQI	26 38 AQI	27 62 AQI	28 75 AQI	29 64 AQI	30 30 AQI	31 52 AQI

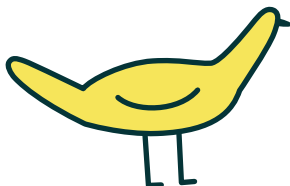
There were 21 days with hourly AQIs in the moderate category, 1 day in the unhealthy for sensitive groups category, 1 day in the unhealthy category, and 1 day in the very unhealthy category.



1-hour Max Daily AQI at Booker T. Washington

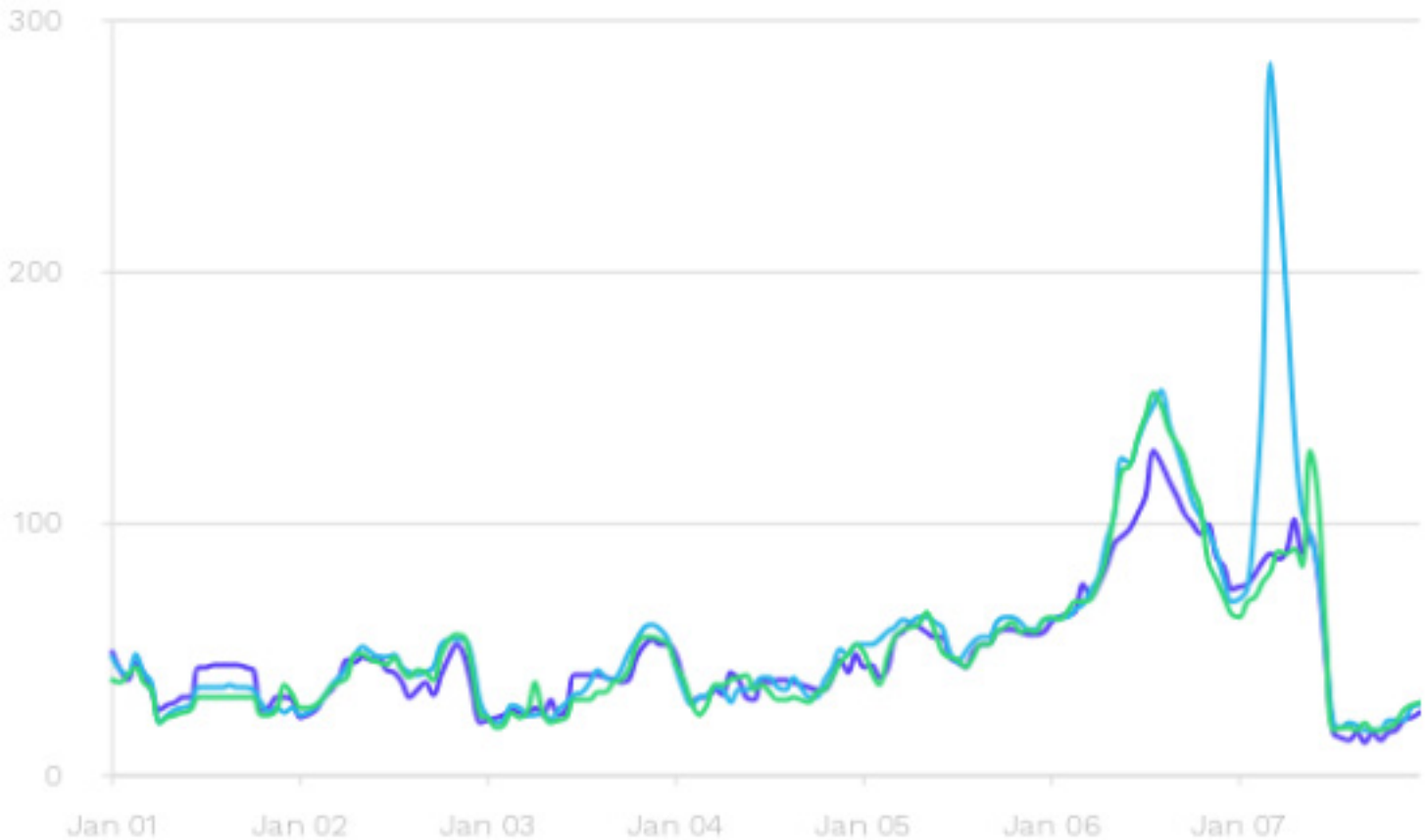
January 2026						
				1 43 AQI	2 56 AQI	3 55 AQI
4 52 AQI	5 65 AQI	6 152 AQI	7 126 AQI	8 70 AQI	9 68 AQI	10 70 AQI
11 52 AQI	12 55 AQI	13 60 AQI	14 70 AQI	15 72 AQI	16 47 AQI	17 82 AQI
18 107 AQI	19 62 AQI	20 45 AQI	21 56 AQI	22 66 AQI	23 38 AQI	24 31 AQI
25 27 AQI	26 34 AQI	27 59 AQI	28 71 AQI	29 58 AQI	30 31 AQI	31 37 AQI

There were 19 days with hourly AQIs in the moderate category, 2 days in the unhealthy for sensitive groups category, and 1 day in the unhealthy category.



One week comparison across 3 sites (January 1–7)

- Marion Gardens Air Quality
- Booker T Washington Air Quality
- Curries Woods Air Quality



One week comparison across 3 sites (January 8–14)

- Marion Gardens Air Quality
- Booker T Washington Air Quality
- Curries Woods Air Quality



One week comparison across 3 sites (January 15–21)

- Marion Gardens Air Quality
- Booker T Washington Air Quality
- Curries Woods Air Quality



One week comparison across 3 sites (January 22–31)

- Marion Gardens Air Quality
- Booker T Washington Air Quality
- Curries Woods Air Quality



1-hour Max Daily AQI

Marion Gardens

0-50 AQI 9 days (29%)

51-100 AQI 17 days (54.8%)

101-150 AQI 5 days (16.1%)

Curries Woods

0-50 AQI 7 days (22.6%)

51-100 AQI 21 days (67.7%)

101-150 AQI 1 day (3.23%)

151-200 AQI 1 day (3.23%)

201-300 AQI 1 day (3.23%)

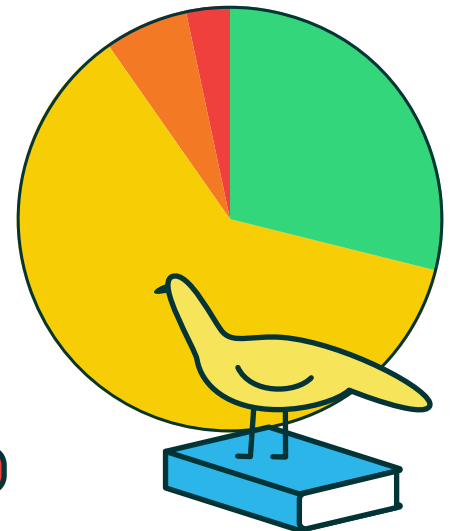
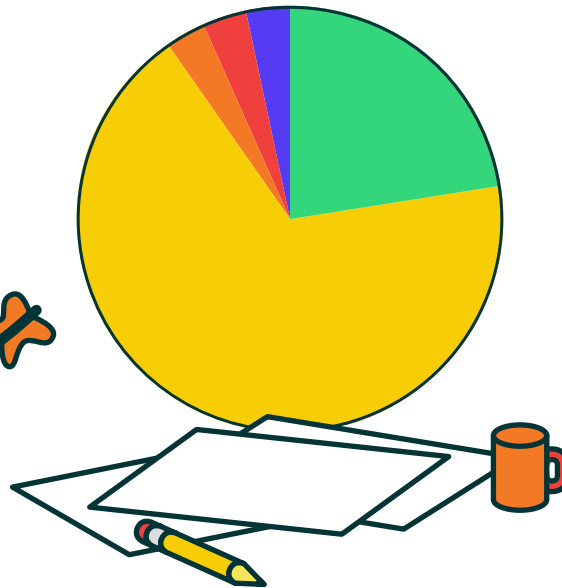
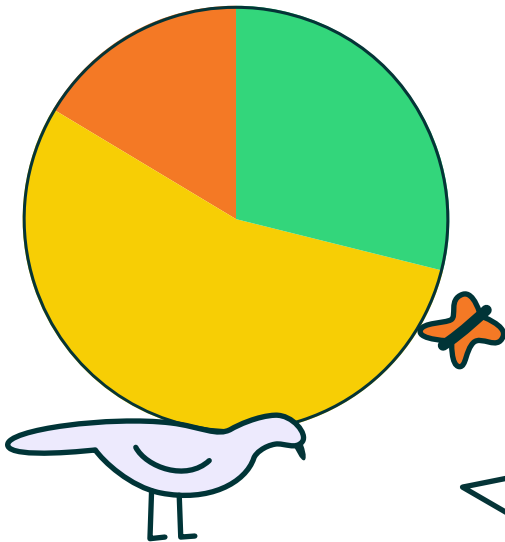
Booker T. Washington

0-50 AQI 9 days (29%)

51-100 AQI 19 days (61.3%)

101-150 AQI 2 days (6.45%)

151-200 AQI 1 day (3.23%)



An Air Quality Index (AQI) value of 50 or below represents good air quality, an AQI value of 51-100 represents moderate air quality, and an AQI value of 151-200 represents unhealthy air quality. The higher the AQI value, the greater the level of air pollution and public health risk.

Insights

✦✦ The air quality was acceptable for the vast majority of the month, with 96.7% of readings in the Good or Moderate categories. However, several significant pollution episodes occurred that warrant attention.

✦✦ **Primary Pollution Event:**
The most severe air quality event occurred at Curries from 4:00AM to 7:00 AM on January 7, 2026. This event represents an extreme overnight pollution spike, indicating values over 9 standard deviations above normal.

Trivia time!

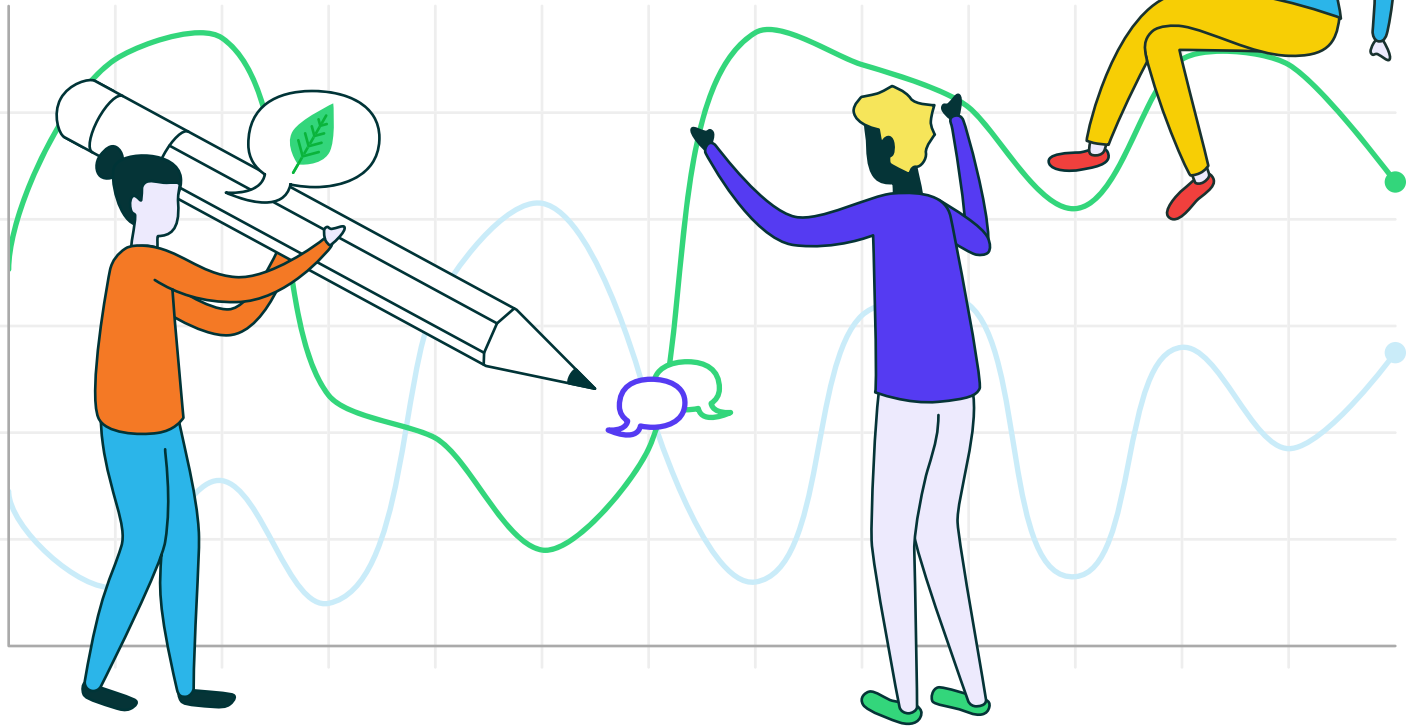
Q: How many countries monitor their air quality?

A: 36% of countries, representing nearly one billion people, are not currently monitoring their air quality. Only one quarter of countries provide full and easy public access to useful air quality data.

Curries Woods: Community Note

“ Curries PM levels much higher than other sites, but elevated PM recorded at all sites and NJDEP sites, Light winds out of NNE. ”

🗨️ Ronald D. January 7, 3:45AM

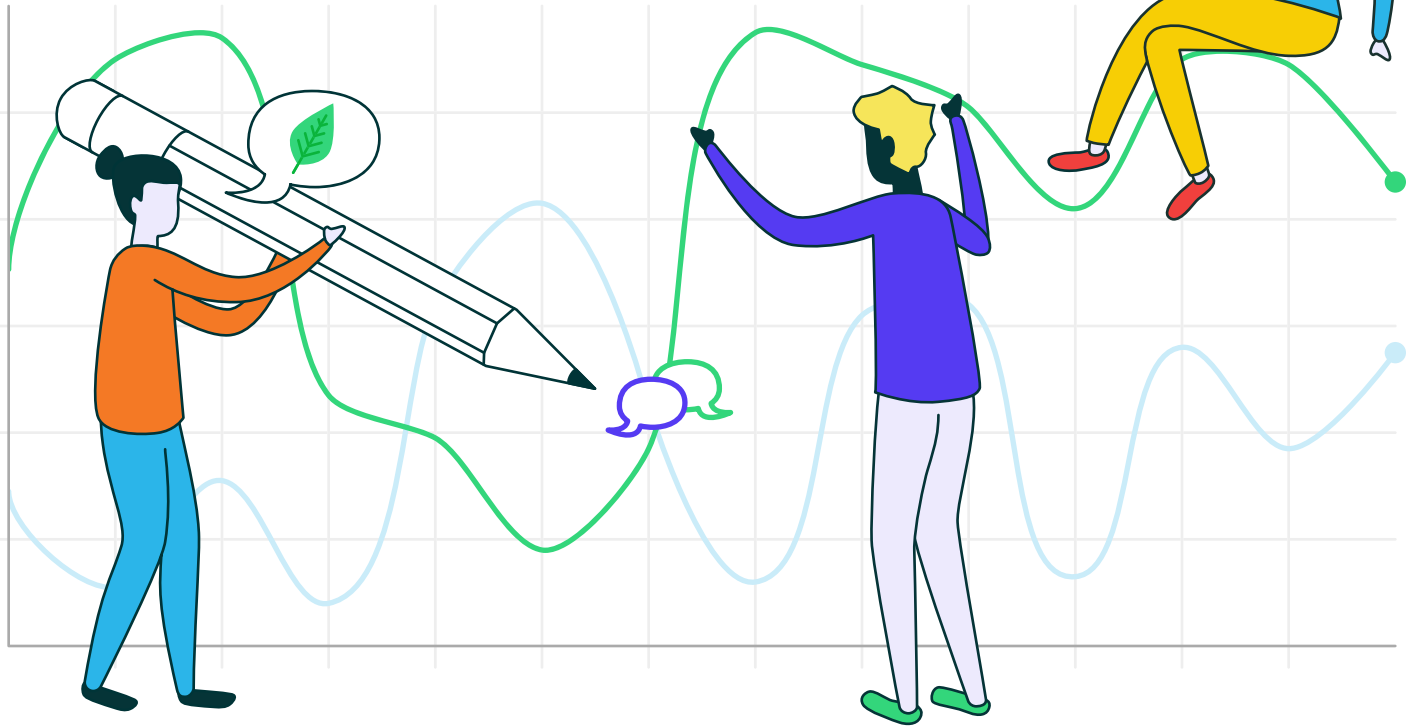


Thank you for being an active steward!

Booker T: Community Note

“ Peak PM readings at all 3 sites, levels close to NJDEP 10% higher with light winds out of SSE. ”

🗨️ Ronald D. January 18, 10:30AM

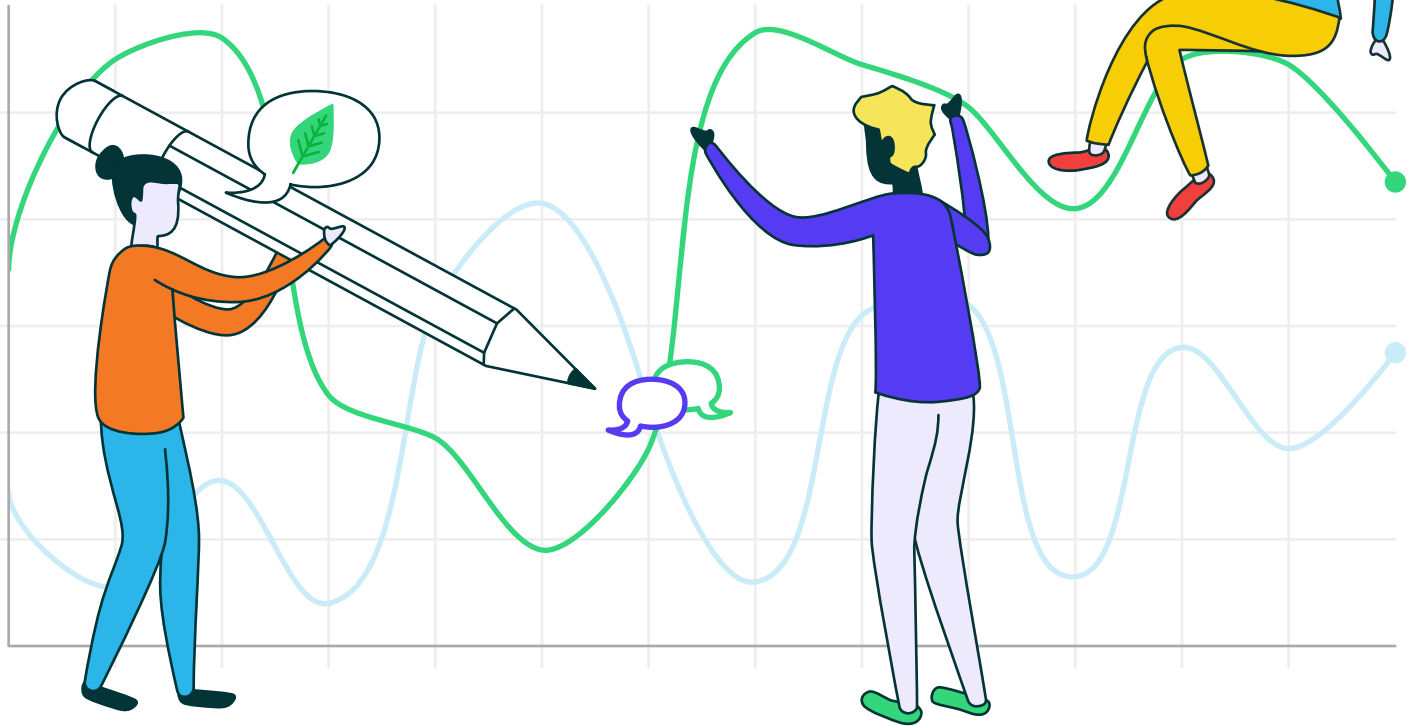


Thank you for being an active steward!

Booker T: Community Note

“ PM peaks seen at all sites levels were comparable to both NJDEP sites, moderate winds out WNW. ”

 Ronald D. January 21, 9:14AM

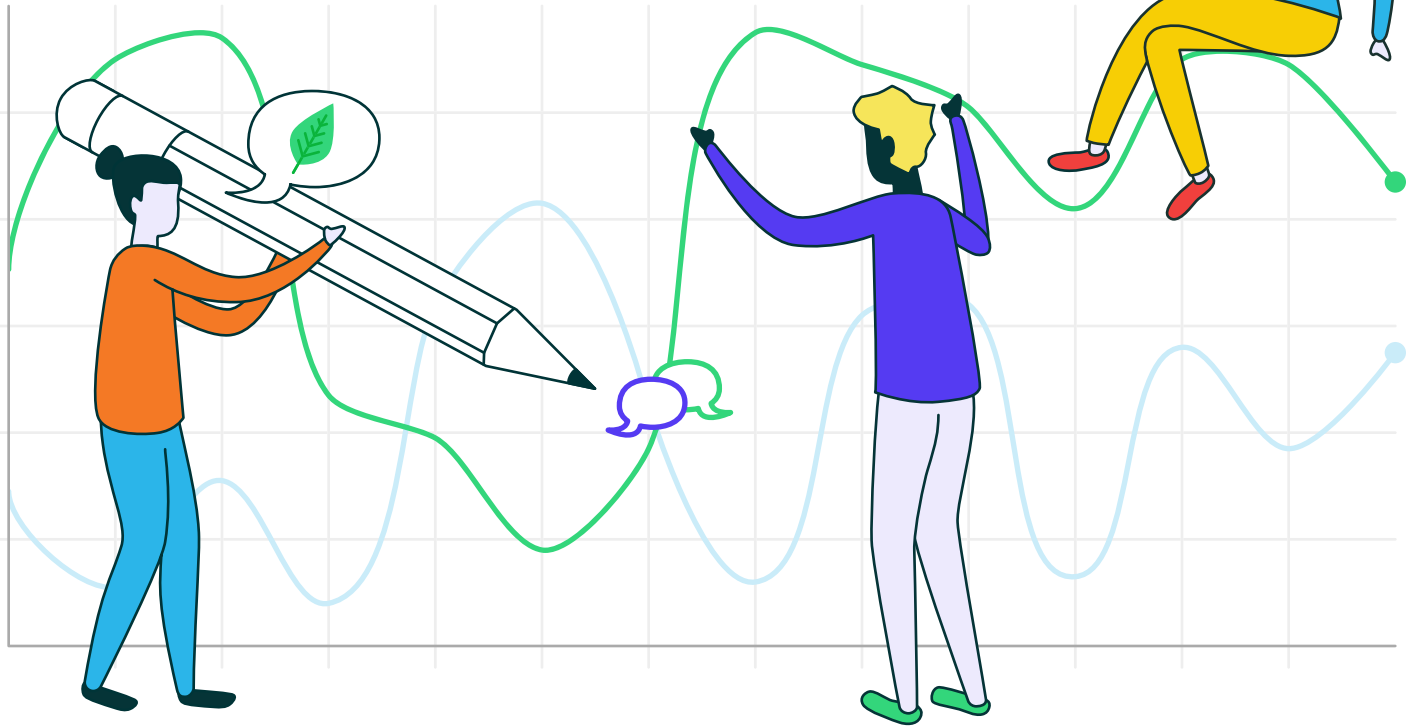


Thank you for being an active steward!

Booker T: Community Note

“ PM peaks seen at all 3 sites, comparable to both NJDEP sites, moderate winds continue out of WNW. ”

 Ronald D. January 22, 9:37AM

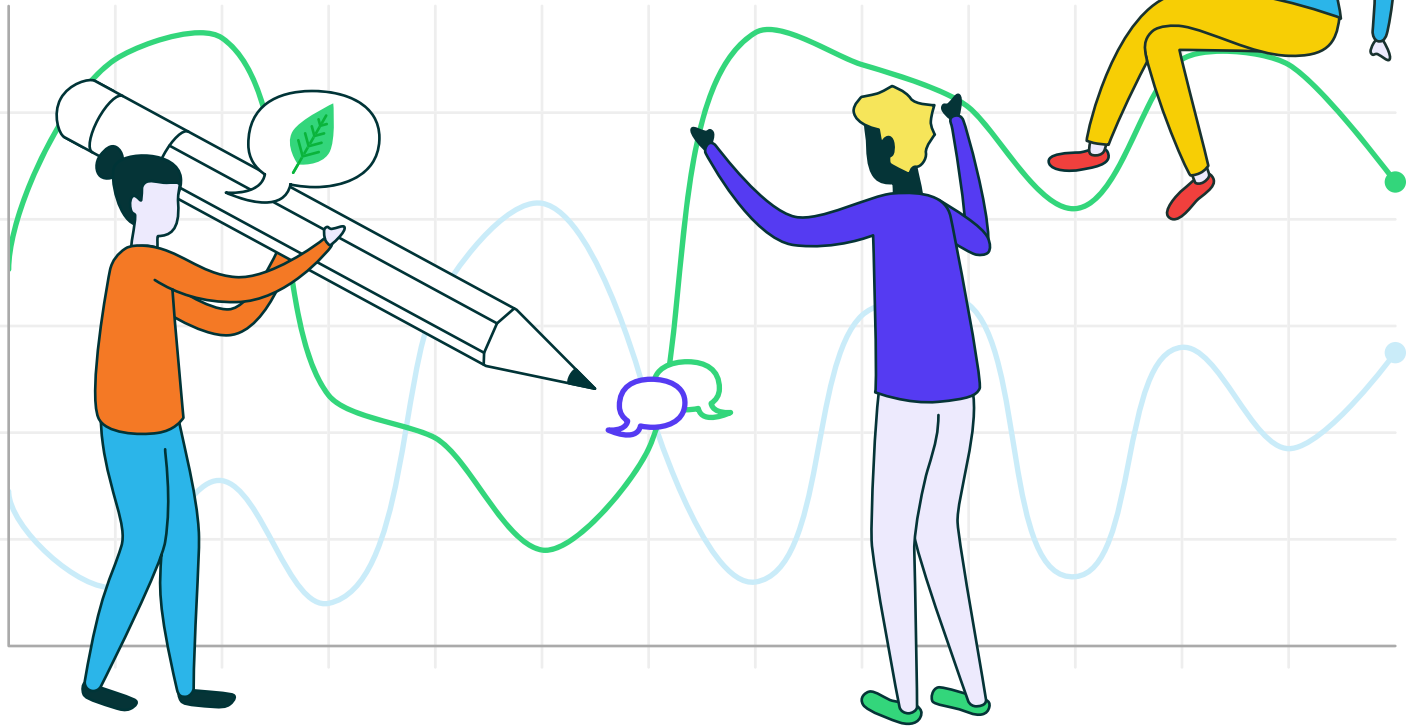


Thank you for being an active steward!

Booker T: Community Note

“ O3 remains elevated for 2 days,
23-24th light to moderate winds
WSW, switching to W-WNW. ”

🗨️ Ronald D. January 24, 12:50PM



Thank you for being an active steward!