

TEMBOO^o

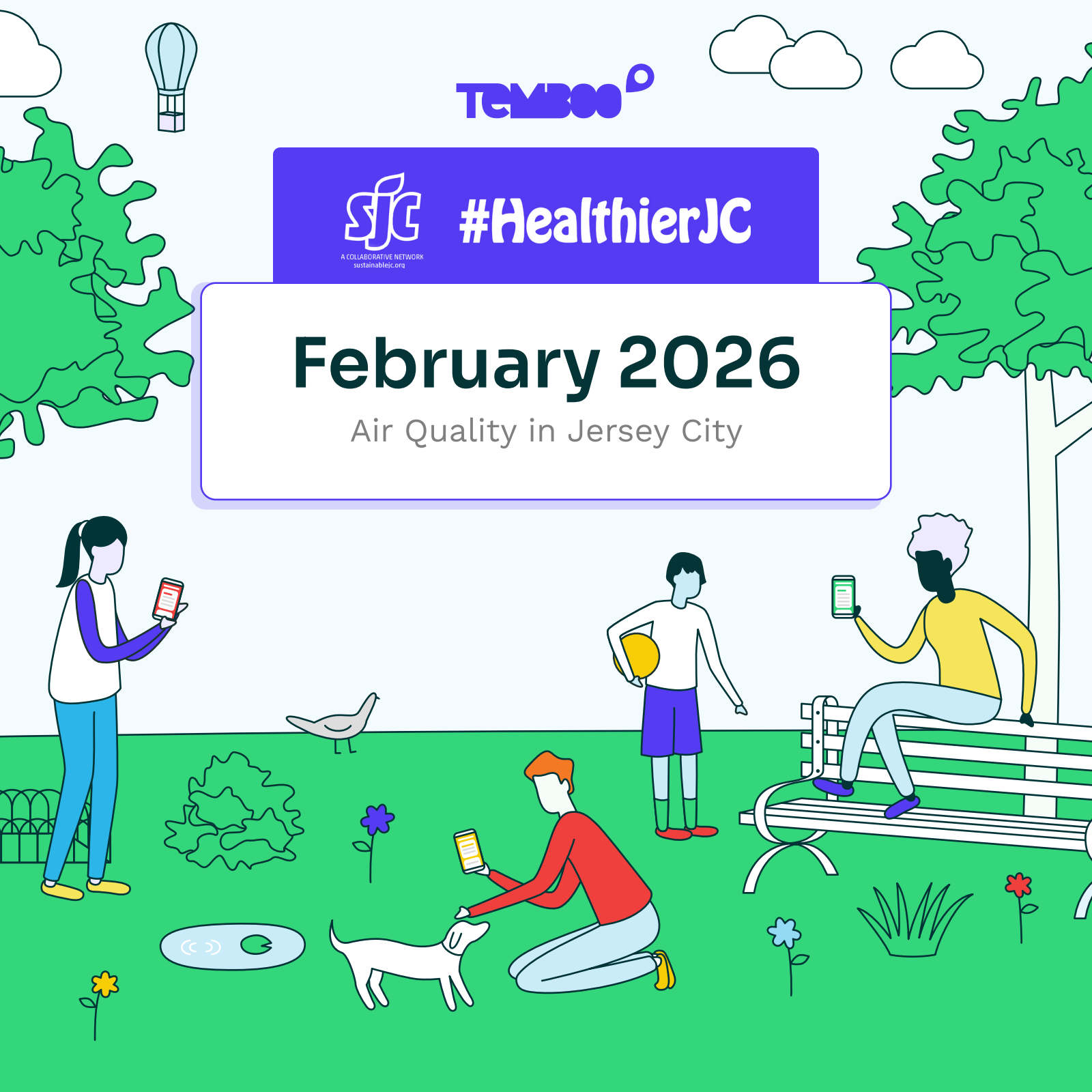


A COLLABORATIVE NETWORK
sustainablejc.org

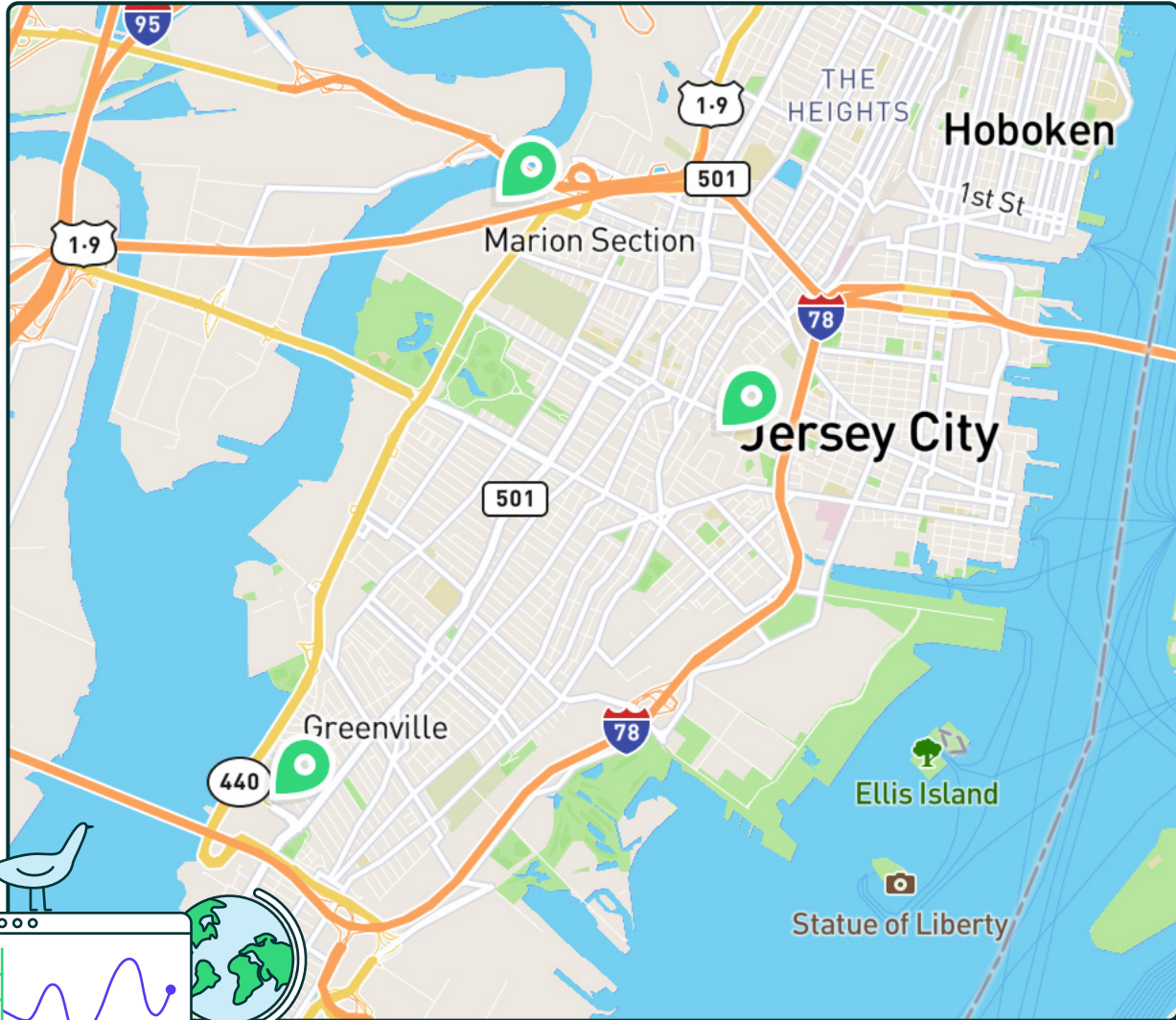
#HealthierJC

February 2026

Air Quality in Jersey City

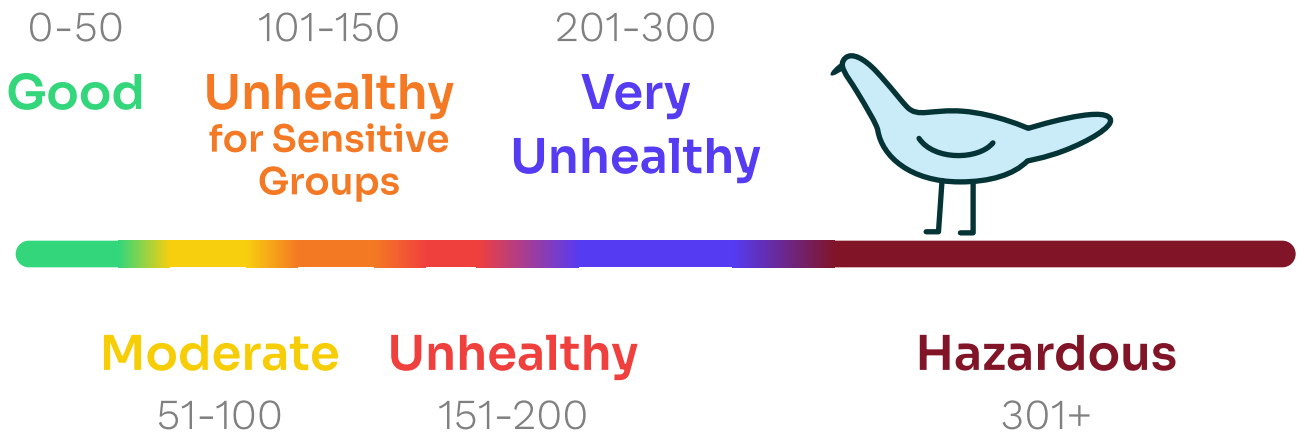


Our air quality monitoring locations



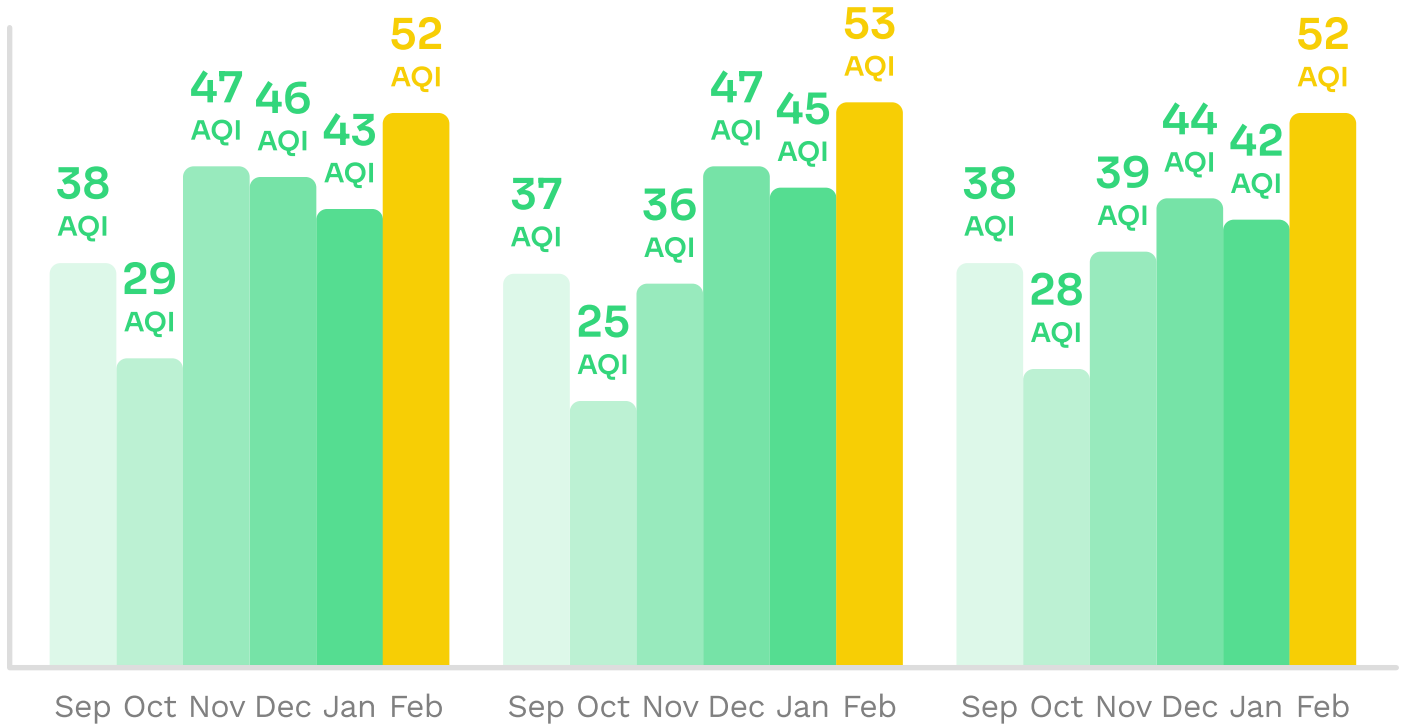
The Air Quality Index (AQI) is a scale for reporting daily air quality.

It tells you how clean or unhealthy your air is, and what associated health effects might be a concern.



Each pollutant has an individual AQI value, and the highest of those values is reported as the overall AQI.

Average Monthly AQI Readings



Booker T. Washington

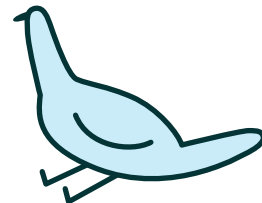
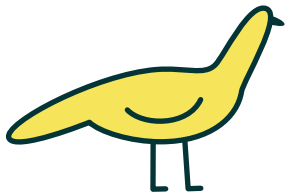
September average is based on 29 days of available data.

An Air Quality Index (AQI) value of 50 or below represents good air quality. The higher the AQI value, the greater the level of air pollution and public health risk.

1-hour Max Daily AQI at Marion Gardens

February 2026						
1 30 AQI	2 50 AQI	3 65 AQI	4 75 AQI	5 74 AQI	6 85 AQI	7 139 AQI
8 31 AQI	9 51 AQI	10 69 AQI	11 97 AQI	12 29 AQI	13 56 AQI	14 78 AQI
15 95 AQI	16 63 AQI	17 136 AQI	18 149 AQI	19 84 AQI	20 66 AQI	21 67 AQI
22 66 AQI	23 44 AQI	24 57 AQI	25 79 AQI	26 104 AQI	27 57 AQI	28 110 AQI

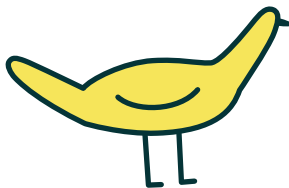
There were 18 days with hourly AQIs in the moderate category and 5 days in the unhealthy for sensitive groups category.



1-hour Max Daily AQI at Curries Woods

February 2026						
1 30 AQI	2 41 AQI	3 69 AQI	4 88 AQI	5 67 AQI	6 92 AQI	7 144 AQI
8 38 AQI	9 53 AQI	10 72 AQI	11 98 AQI	12 29 AQI	13 61 AQI	14 87 AQI
15 109 AQI	16 64 AQI	17 124 AQI	18 199 AQI	19 80 AQI	20 58 AQI	21 68 AQI
22 63 AQI	23 42 AQI	24 60 AQI	25 79 AQI	26 102 AQI	27 62 AQI	28 154 AQI

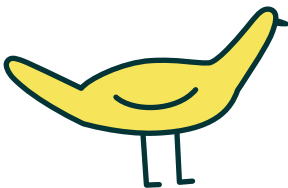
There were 15 days with hourly AQIs in the moderate category, 4 days in the unhealthy for sensitive groups category, and 2 days in the unhealthy category.



1-hour Max Daily AQI at Booker T. Washington

February 2026						
1 31 AQI	2 32 AQI	3 66 AQI	4 75 AQI	5 62 AQI	6 81 AQI	7 133 AQI
8 31 AQI	9 46 AQI	10 71 AQI	11 102 AQI	12 31 AQI	13 57 AQI	14 90 AQI
15 130 AQI	16 61 AQI	17 139 AQI	18 134 AQI	19 72 AQI	20 62 AQI	21 63 AQI
22 61 AQI	23 41 AQI	24 60 AQI	25 81 AQI	26 105 AQI	27 58 AQI	28 132 AQI

There were 15 days with hourly AQIs in the moderate category and 7 days in the unhealthy for sensitive groups category.



One week comparison across 3 sites (February 1–7)

- Marion Gardens Air Quality
- Booker T Washington Air Quality
- Curries Woods Air Quality



One week comparison across 3 sites (February 8–14)

- Marion Gardens Air Quality
- Booker T Washington Air Quality
- Curries Woods Air Quality



One week comparison across 3 sites (February 15–21)

Marion Gardens Air Quality Booker T Washington Air Quality
Curries Woods Air Quality



One week comparison across 3 sites (February 22–28)

- Marion Gardens Air Quality
- Booker T Washington Air Quality
- Curries Woods Air Quality



1-hour Max Daily AQI

Marion Gardens

0-50 AQI 5 days (17.9%)

51-100 AQI 18 days (64.3%)

101-150 AQI 5 days (17.9%)

Curries Woods

0-50 AQI 5 days (17.9%)

51-100 AQI 17 days (60.7%)

101-150 AQI 4 days (14.3%)

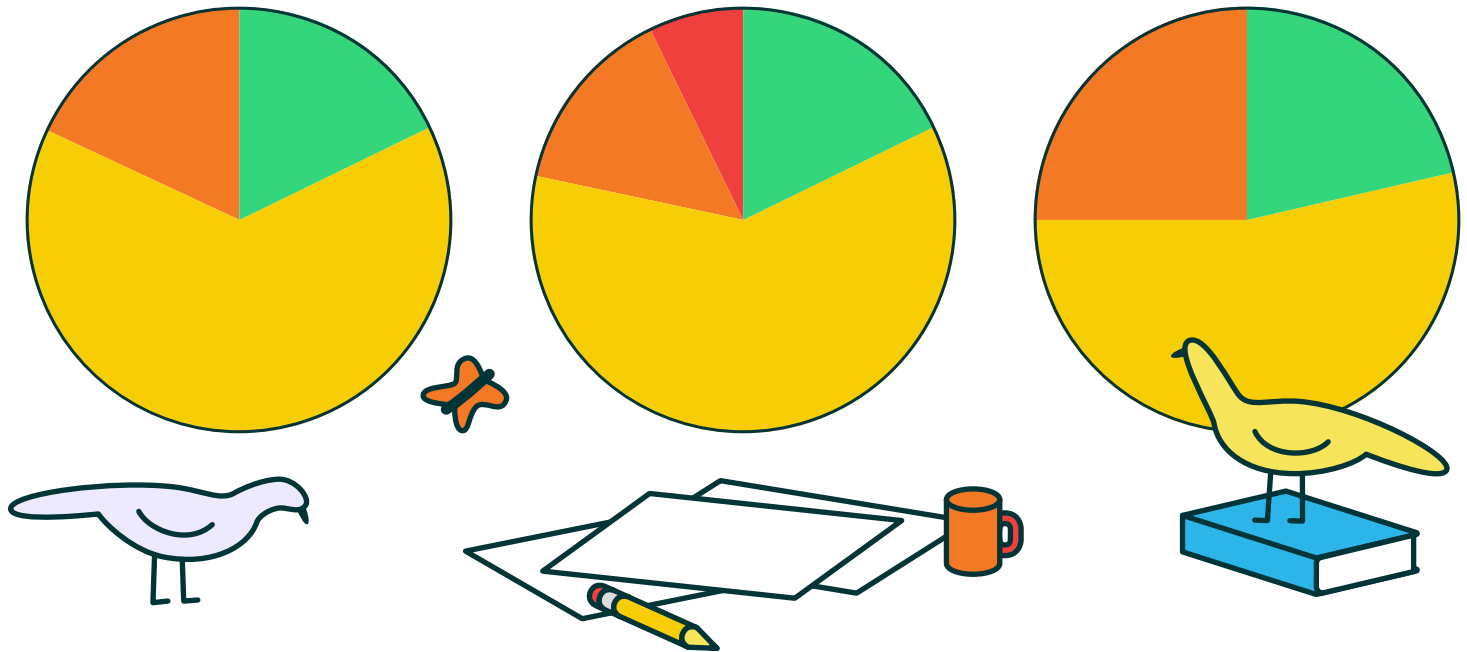
151-200 AQI 2 days (7.14%)

Booker T. Washington

0-50 AQI 6 days (21.4%)

51-100 AQI 15 days (53.6%)

101-150 AQI 7 days (25.%)



An Air Quality Index (AQI) value of 50 or below represents good air quality, an AQI value of 51-100 represents moderate air quality, and an AQI value of 151-200 represents unhealthy air quality. The higher the AQI value, the greater the level of air pollution and public health risk.

Insights

✨ The air quality across all three monitoring locations (Marion, Curries, and Booker) during February 2026 was generally good to moderate, with an average AQI of 52.

✨ **Primary Pollution Event:**
The synchronized spike across all three locations on February 18 (with precursor activity on February 17) suggests a regional air quality event rather than localized emissions.

Cold temperatures (31.9°F average) during winter months can create atmospheric inversions that trap pollutants near ground level, particularly during overnight hours when the February 18 spike began.

Trivia time!

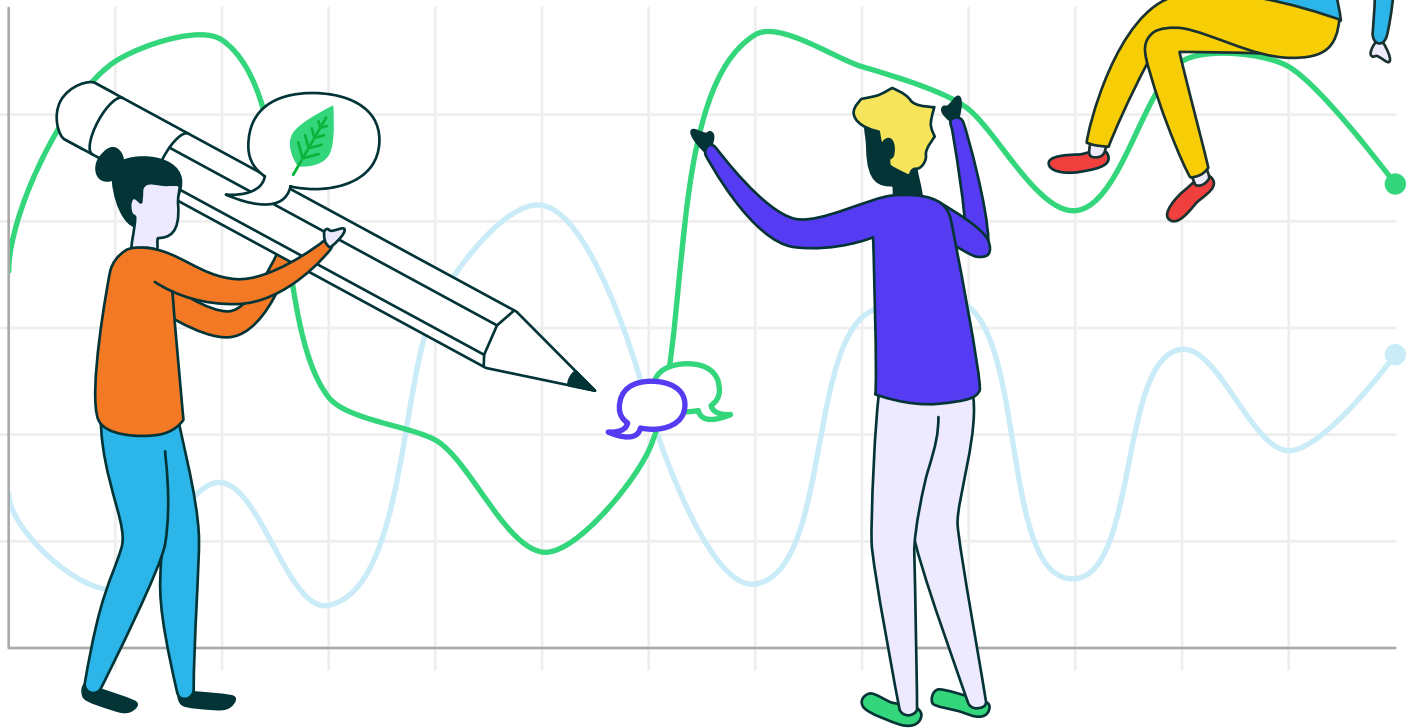
Q: Did you know?

A: Air pollution is the largest environmental threat to human health worldwide. Air pollution now kills more people than tobacco worldwide (7.9 million premature deaths annually are attributed to air pollution).

Curries Woods: Community Note

“ PM peak seen at all sites light winds out of SE-ESE. ”

🗨️ Ronald D. February 5, 7:04PM

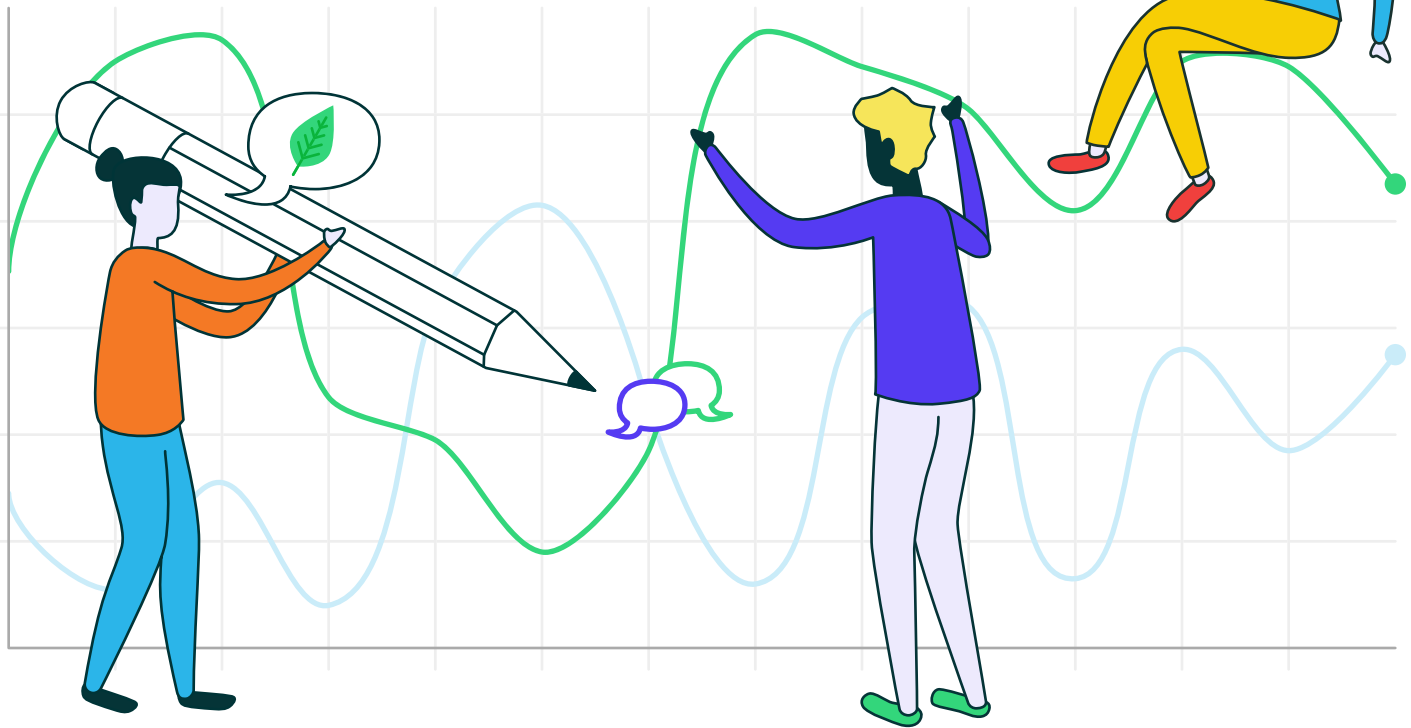


Thank you for being an active steward!

Curries Woods: Community Note

“ PM peak seen at all sites with moderate winds out of the NW-WNW. ”

🗨️ Ronald D. February 7, 2:39AM

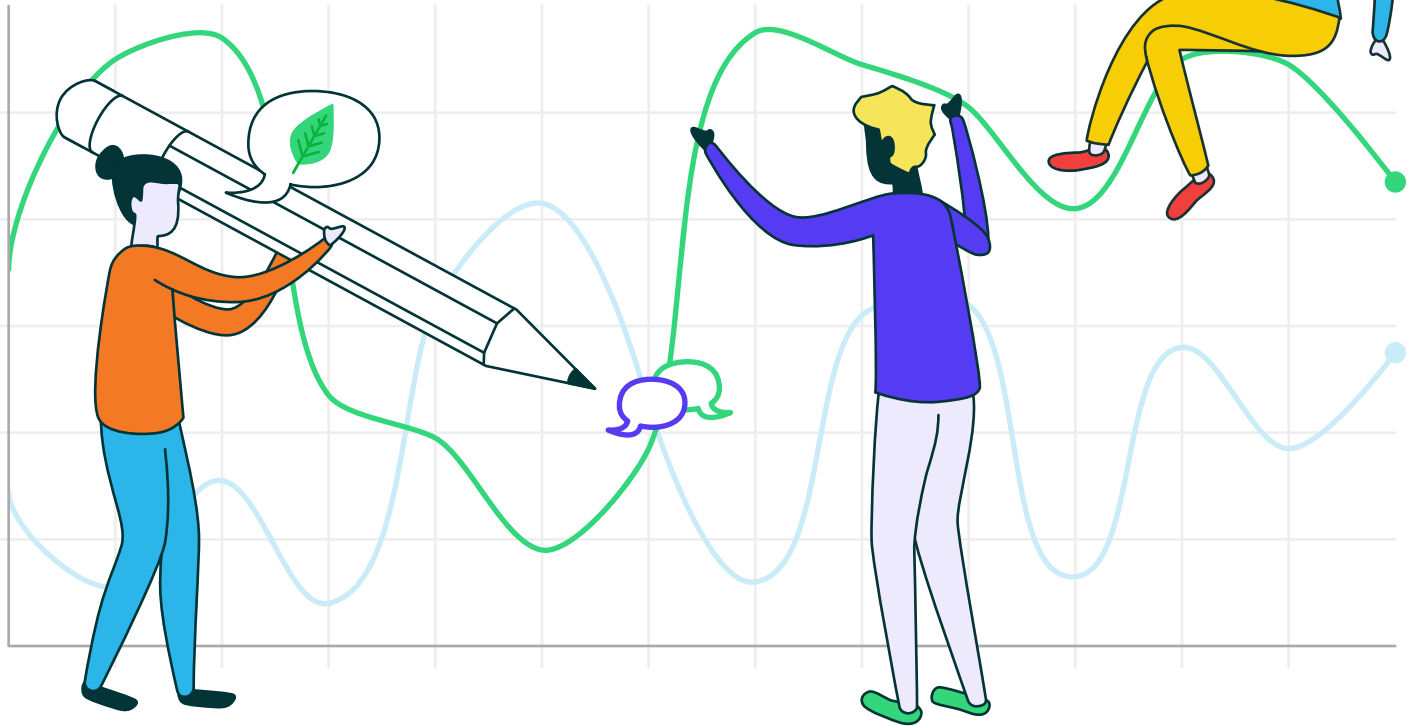


Thank you for being an active steward!

Curries Woods: Community Note

“ Elevate O3 seen at all sites on Feb 7-9th with moderate winds starting out of the NW-WNW, but then changing to SE and NE on 8th and 9th and then switching back to NW-WNW. ”

 Ronald D. February 7, 9:49PM

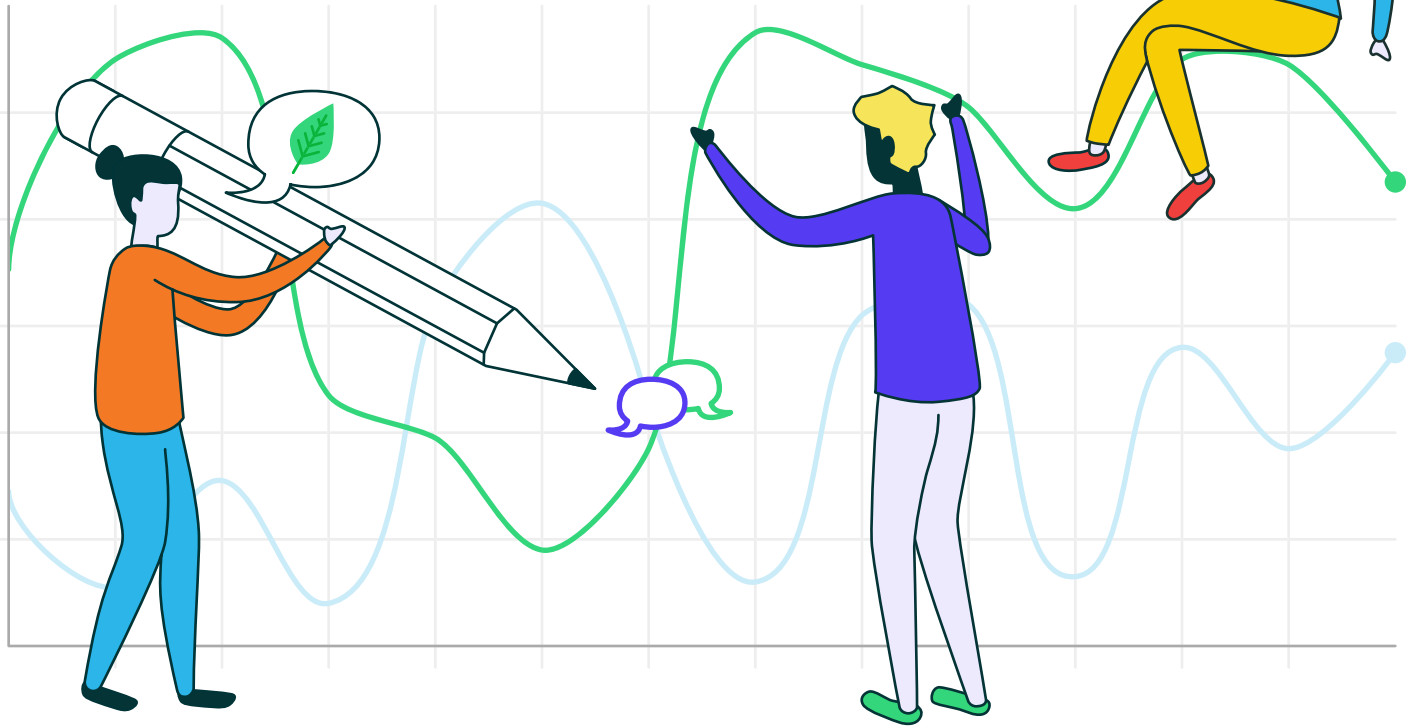


Thank you for being an active steward!

Marion Gardens: Community Note

“ PM peaks seen at all sites with consistent light to moderate winds out of WSW-SSW starting around 3am on Feb 3rd thru 6am on Feb 4th. ”

🗨️ Ronald D. February 4, 5:31AM

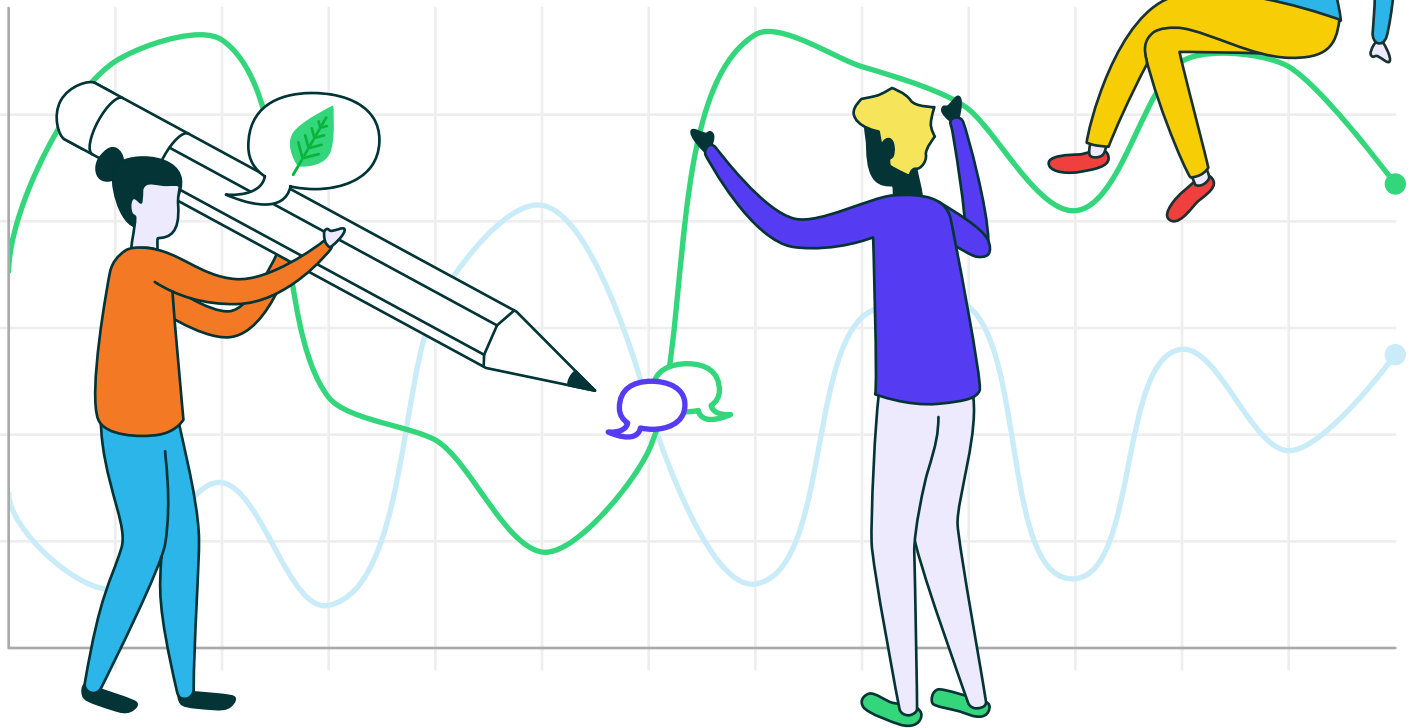


Thank you for being an active steward!

Marion Gardens: Community Note

“ Elevated PM at all sites with light-moderate winds from WSW-SSW. ”

🗨️ Ronald D. February 11, 7:48AM

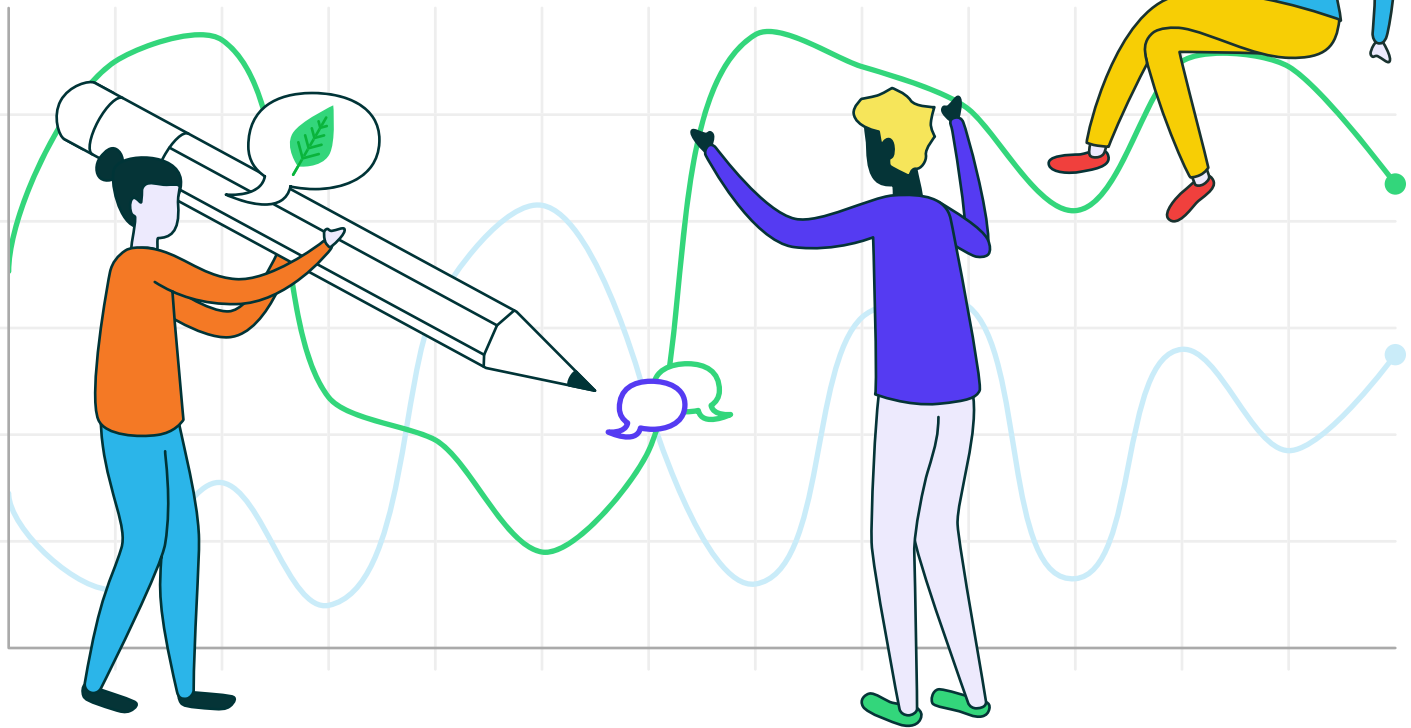


Thank you for being an active steward!

Marion Gardens: Community Note

“ O3 remained elevated all day on 12th with WNW-NW winds. ”

🗨️ Ronald D. February 12, 4:19PM

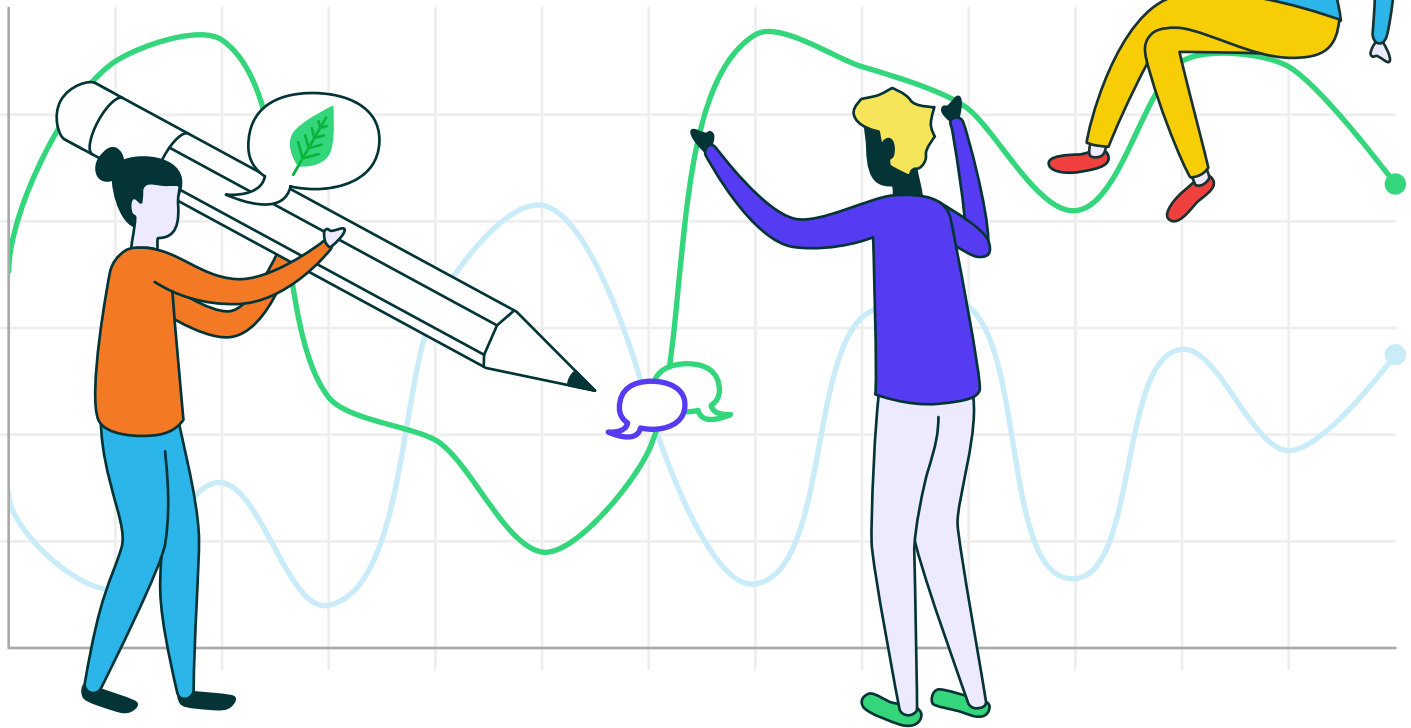


Thank you for being an active steward!

Marion Gardens: Community Note

“ PM peaks at all sites with NNE-ENE light winds. ”

🗨️ Ronald D. February 15, 10:06AM

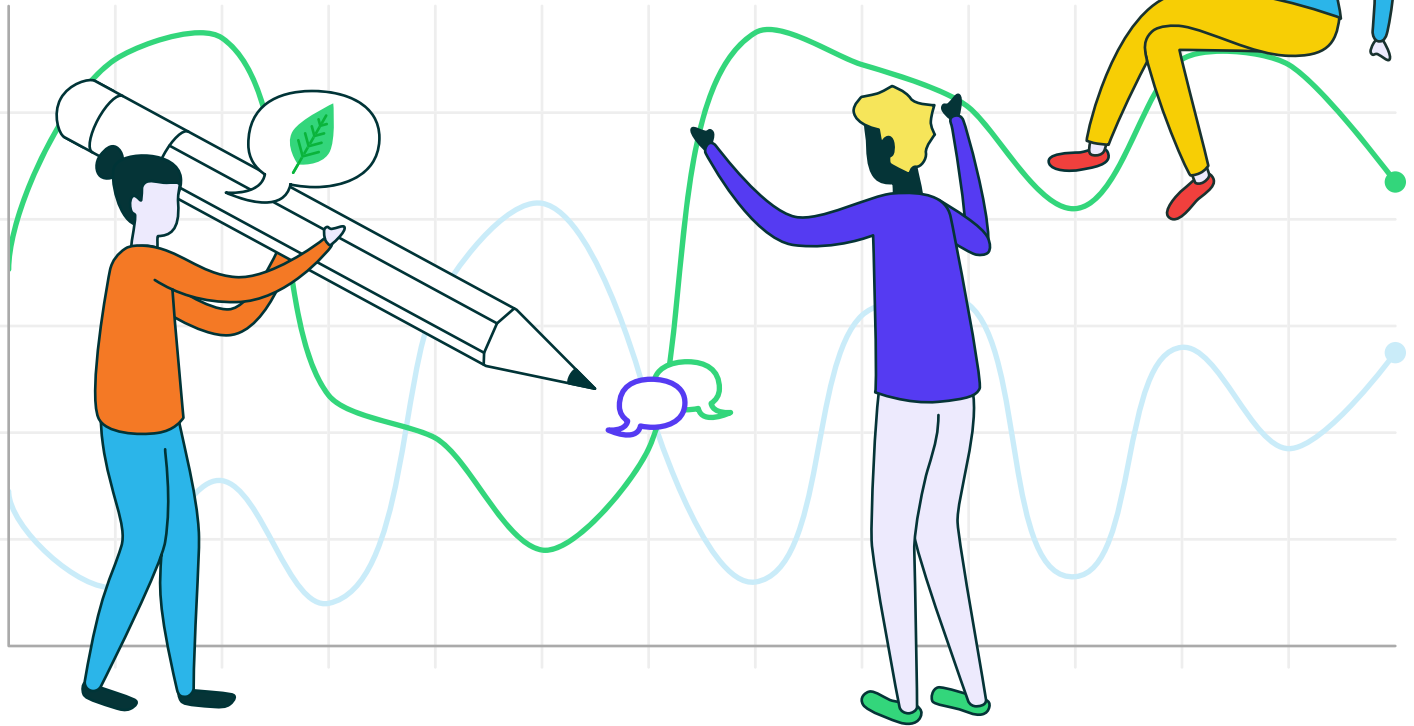


Thank you for being an active steward!

Marion Gardens: Community Note

“ O3 remained elevated extended period on 15-16 with winds from the E-ENE. ”

🗨️ Ronald D. February 16, 8:17AM

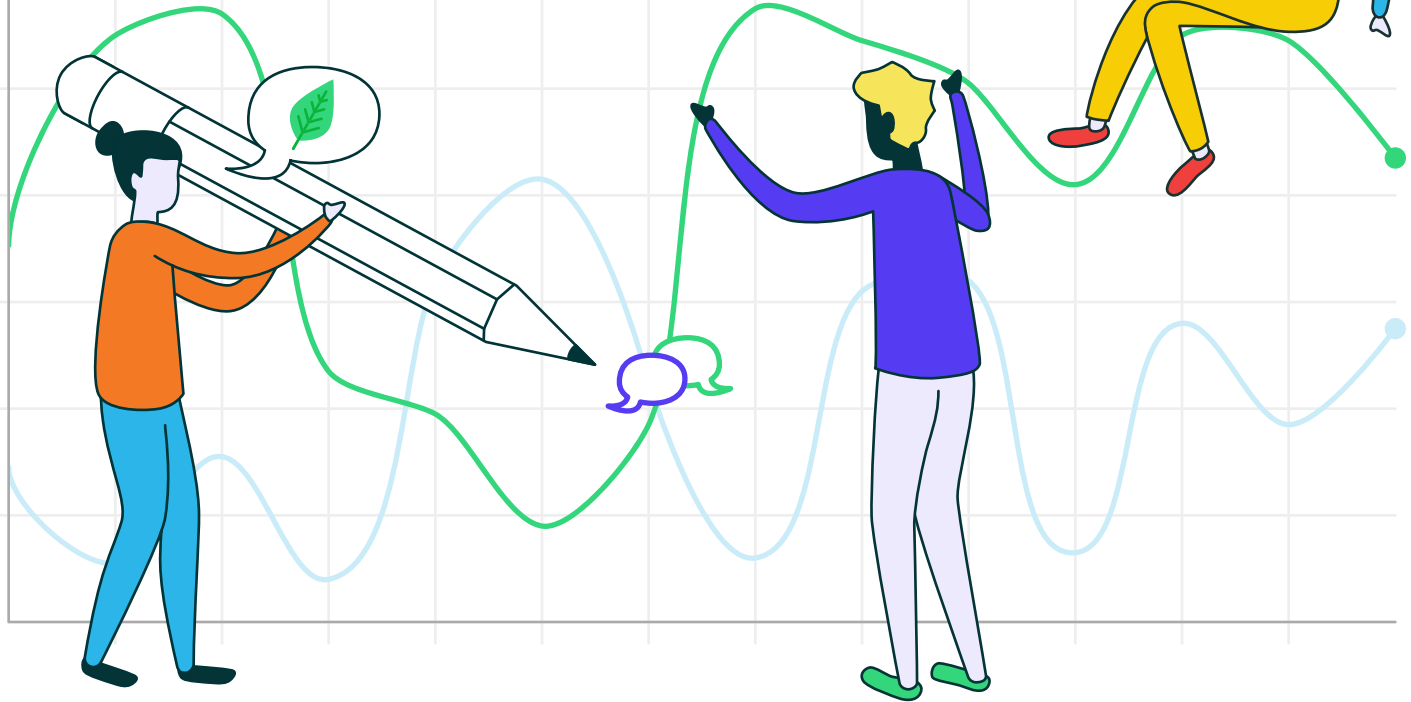


Thank you for being an active steward!

Marion Gardens: Community Note

“ Elevated PM at all sites with S-SW light winds. The entire NY metro area is seeing AQI over 100 unhealthy for sensitive groups. The poor air quality is primarily caused by stagnant air and light winds, which prevent pollution from dispersing. ”

 Ronald D. February 17, 8:54AM

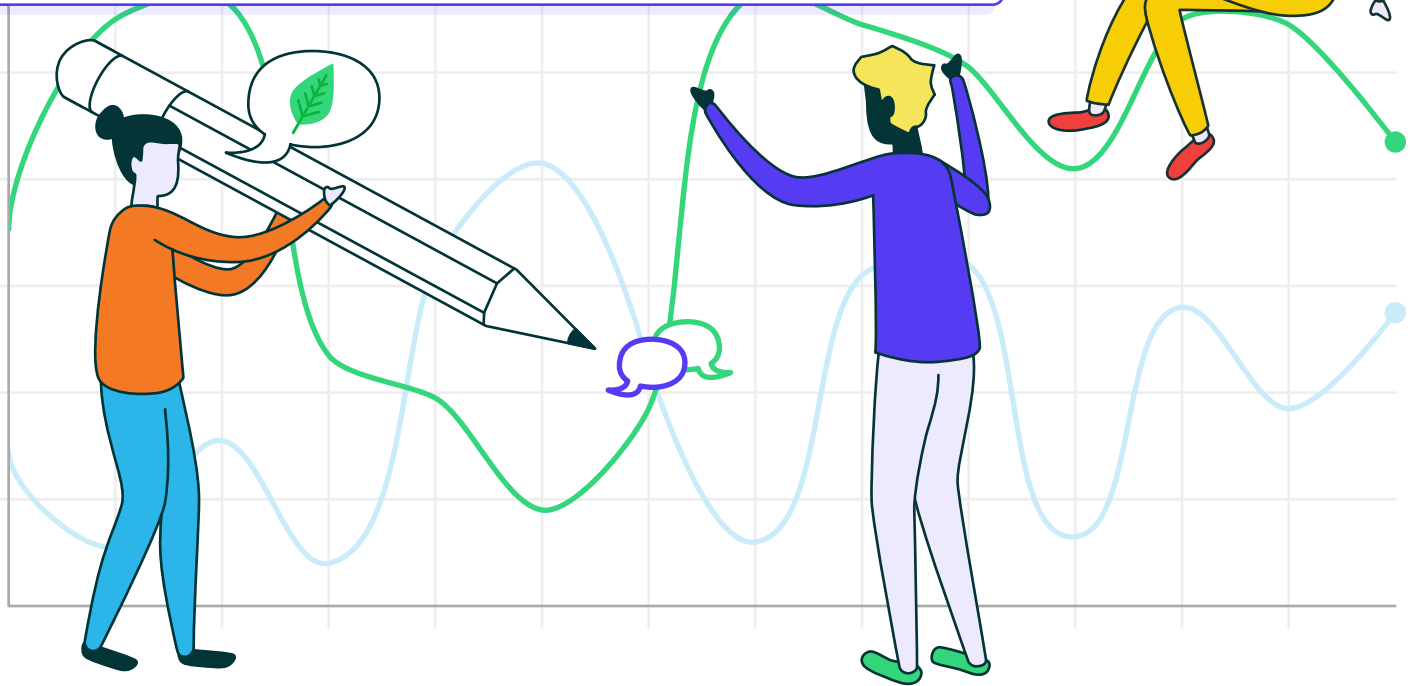


Thank you for being an active steward!

Marion Gardens: Community Note

“ Low to moderate winds from SW-SSW starting 11 pm on 2/16 - 4 am on 2/18 created elevated PM levels at all 3 sites peaks ranging from high 40s to low 50s ug/ m³ and high 90s to 115 ug/m³ PM_{2.5}/PM₁₀. There were EPA alerts for NY Metro Region during these times. Field observers indicated dusty conditions on 2/16. ”

 Ronald D. February 18, 1:52PM



Thank you for being an active steward!